

Primary School's

Recycling Bin Survey



Be Recycling Royalty!!

Introduction

Stuff! My stuff! Your Stuff! Our Stuff! We all know what we mean when we talk about 'stuff' but, when we talk about stuff what we are really talking about is natural resources. Natural resources are things from nature which humans use.

What are Natural Resources?



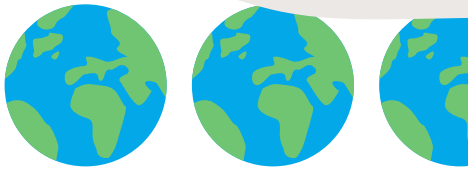
Did you know, your school shirt contains cotton from a cotton plant!

Did you know, your water bottle is made from plastic which is made from oil buried deep in the ground!



How much natural resources do we use?

Did you know we are using natural resources faster than the Earth can make them back? If everyone on Earth lived like people in the UK, we would need 2.6 planets to live the way we do now.



Why is it a problem?

Growing or extracting natural resources to make our stuff disturbs habitats.



The energy used in factories to make our 'stuff' makes climate change worse because it releases more carbon dioxide into the atmosphere.

**Luckily, there is
an answer ...**

**And it begins with
decisions we
make about...**

Stuff!

Our Stuff

This picture shows us that the best thing we can do to make sure we have enough of the things we need in future, reduce the effects of climate change and protect habitats is to have less stuff and make sure we use it again and again until it needs to be put into the recycle bin.



This Booklet

This booklet is about recycling. Recycling is when ‘stuff’ which can no longer be repaired or used is made into brand new things. Recycling is good as it means we don’t have to use as many natural resources or energy to make things.

This booklet is designed to help your school make it easier for children and teachers to recycle stuff that can no longer be used. An important part of that is making sure we have enough of the right bins, in the right places with the right sort of signs.

To do this, we are going to complete a survey of recycling bins in 5 areas of the school.



The Playground



The Lunch Hall



The Staff Room



The Classroom



The School Office

Types of Bins

In this booklet we talk about recycling bins but your schools may also have general bins and food bins.

Recycling Bins

These are bins where you can put damaged or unwanted items so they can be made into new things e.g. paper, cardboard, plastic etc.

Food Bins

These are bins where you can put left over food from your breakfast club, breaktime snacks, lunches and cooking lessons. e.g. apple cores, crusts etc.

General Bins

This is where you can put items which can't be recycled e.g. laminated paper, tissues, broken stationery etc. If your school does not yet have a food bin, your general bin will also contain food items.



The Playground

1. First of all sketch a plan of your playground.
2. Add a square where there is a general waste bin.
3. Add a circle where there is a recycle bin.
4. Add a triangle where there is a food waste bin.
5. Add an X where you find litter.
6. Add a stick person in areas where children mainly play.



Playground Sketch

Here are a few more questions about the bins in your **playground**.



1. Are the bins colour coded. For example is the recycling bin a different colour to the general bin or food bin?

Yes ☐ No ☐

2. Are there signs telling people what to put in the recycling bin?

Yes ☐ No ☐

3. Is the sign near the recycling bin?

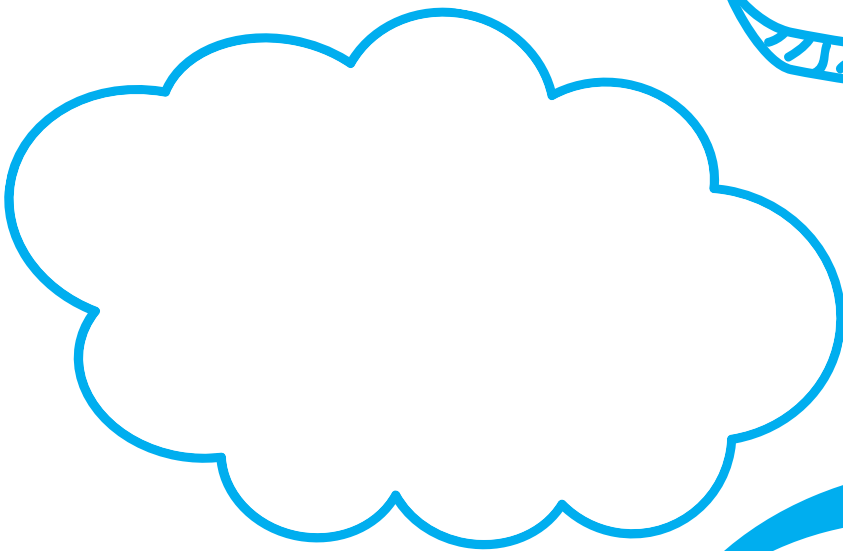
Yes ☐ No ☐

4. Is the sign at eye level?

Yes ☐ No ☐

In your group talk about what you have found out. How could you make recycling easier at your school?

Action Plan



The Lunch Hall



1. First of all sketch a plan of your lunch hall
2. Add a square where there is a general waste bin.
3. Add a circle where there is a recycling bin.
4. Add a triangle where there is a food waste bin.
5. Add an X where cutlery, glasses and plates are returned.

Lunch Hall Sketch

Here are a few more questions about the bins in your **lunch hall**.



1. Are the bins colour coded. For example is the recycling bin a different colour to the general bin or food bin?

Yes ☐ No ☐

2. Are there signs telling people what to put in the recycling bin?

Yes ☐ No ☐

3. Is the sign near the recycling bin?

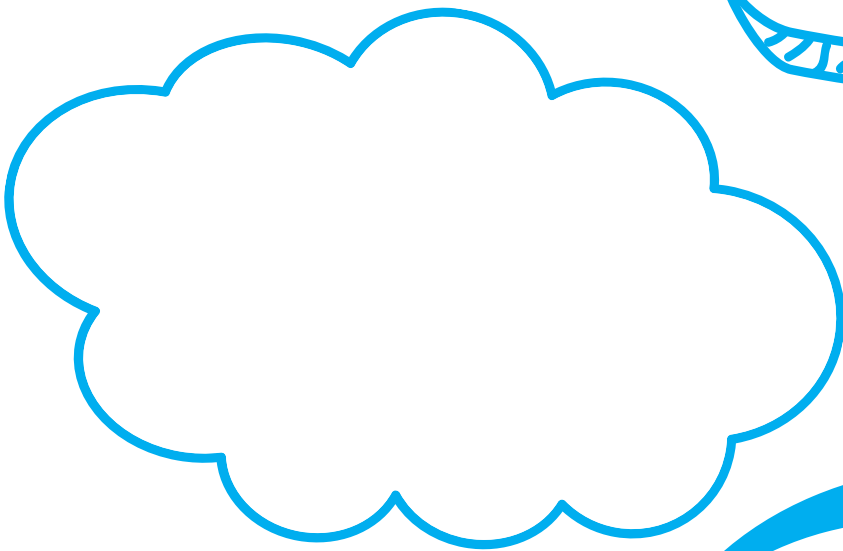
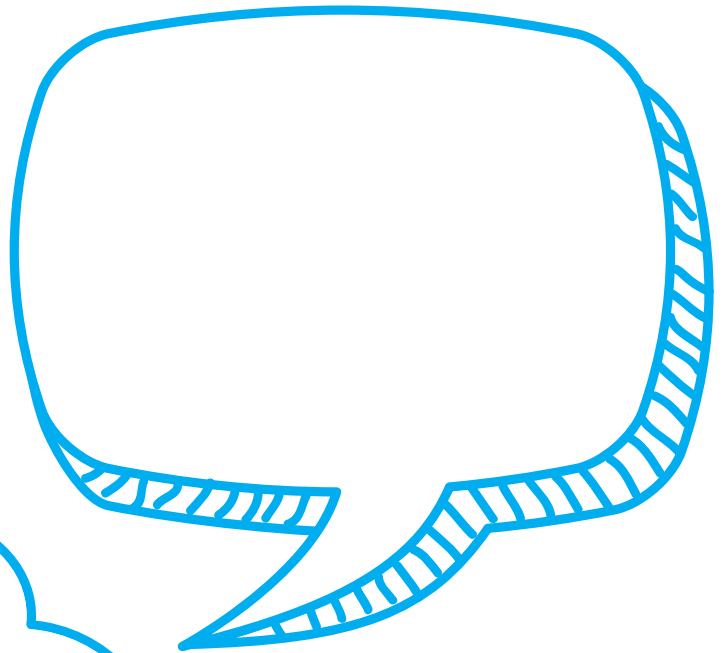
Yes ☐ No ☐

4. Is the sign at eye level?

Yes ☐ No ☐

In your group talk about what you have found out. How could you make recycling easier at your school?

Action Plan



The Classroom



Here are a few more questions about the bins in your **classroom**.

1. Are the bins colour coded. For example is the recycling bin a different colour to the general bin or food bin?

Yes ☐ No ☐

2. Are there signs telling people what to put in the recycling bin?

Yes ☐ No ☐

3. Is the sign near the recycling bin?

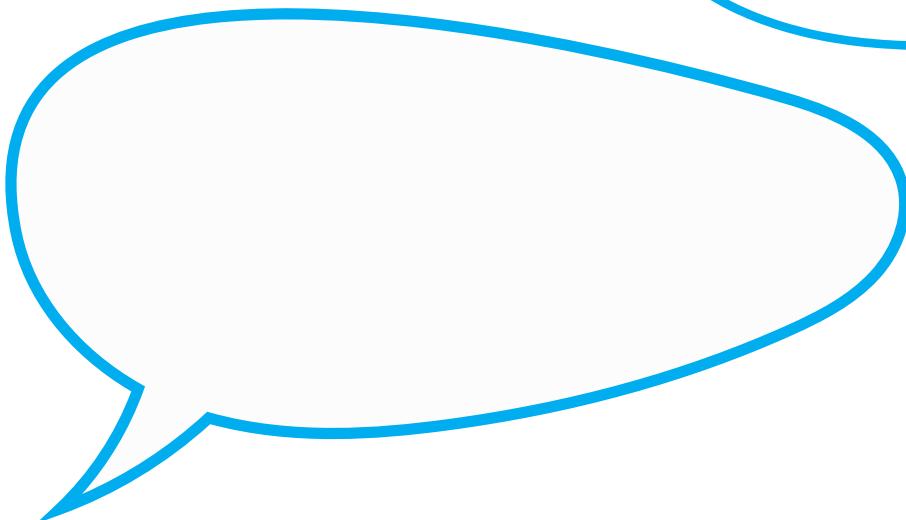
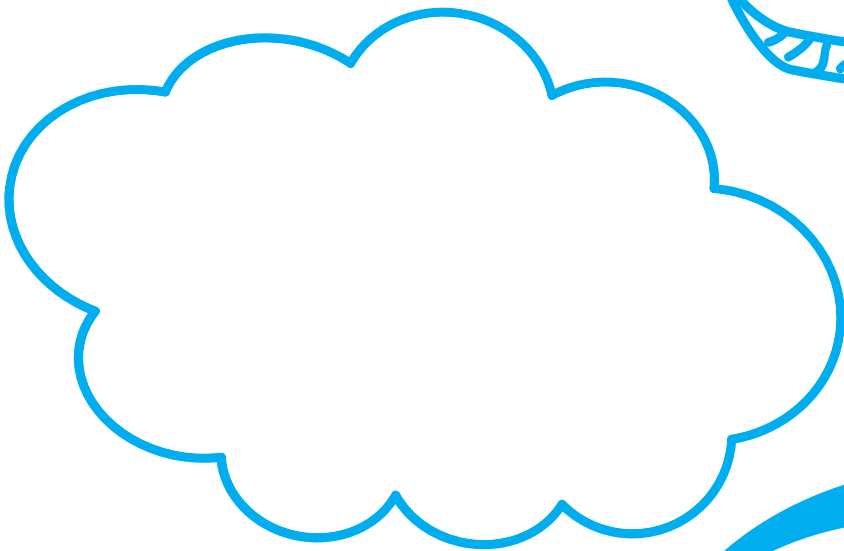
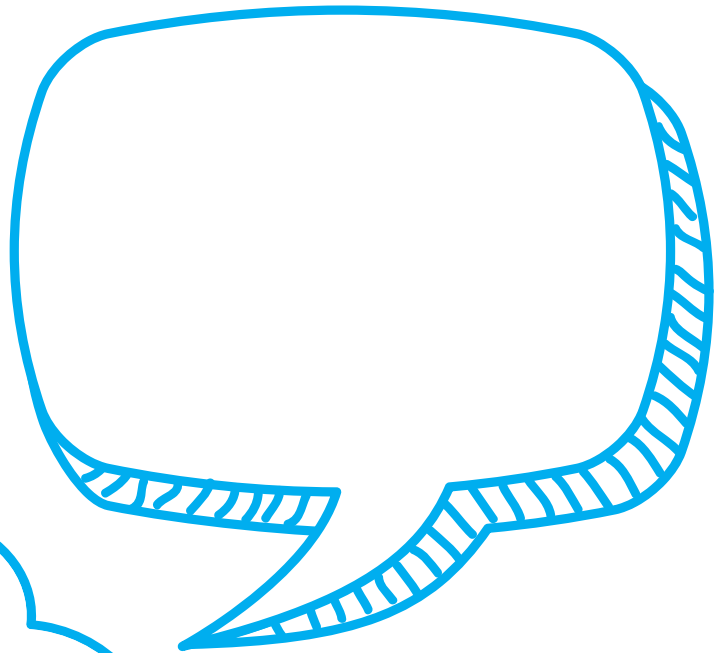
Yes ☐ No ☐

4. Is the sign at eye level?

Yes ☐ No ☐

In your group talk about what you have found out. How could you make recycling easier at your school?

Action Plan



The Staff Room



Here are a few more questions about the bins in your **staff room**.

1. Are the bins colour coded. For example is the recycling bin a different colour to the general bin or food bin?

Yes ☐ No ☐

2. Are there signs telling people what to put in the recycling bin?

Yes ☐ No ☐

3. Is the sign near the recycling bin?

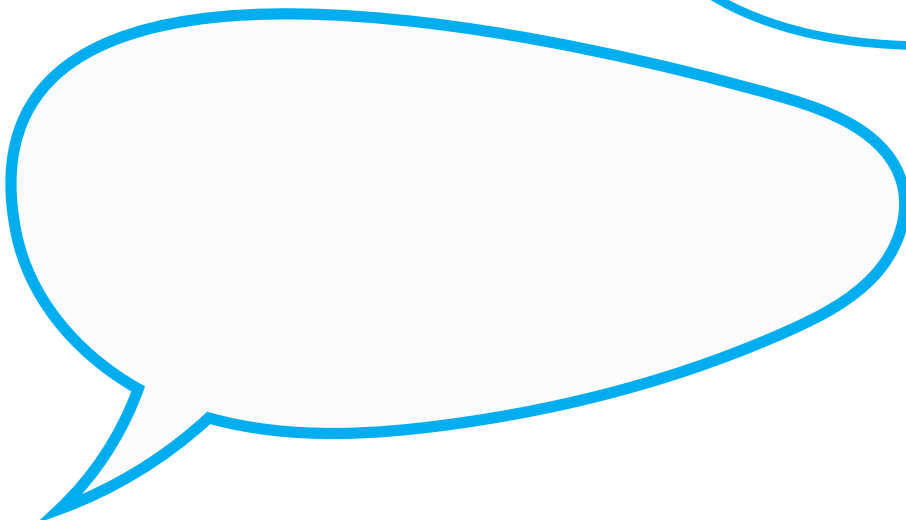
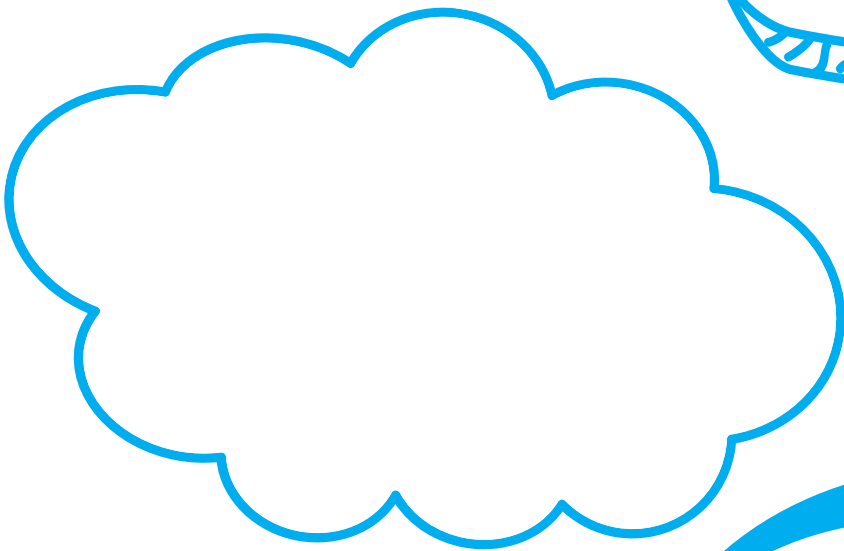
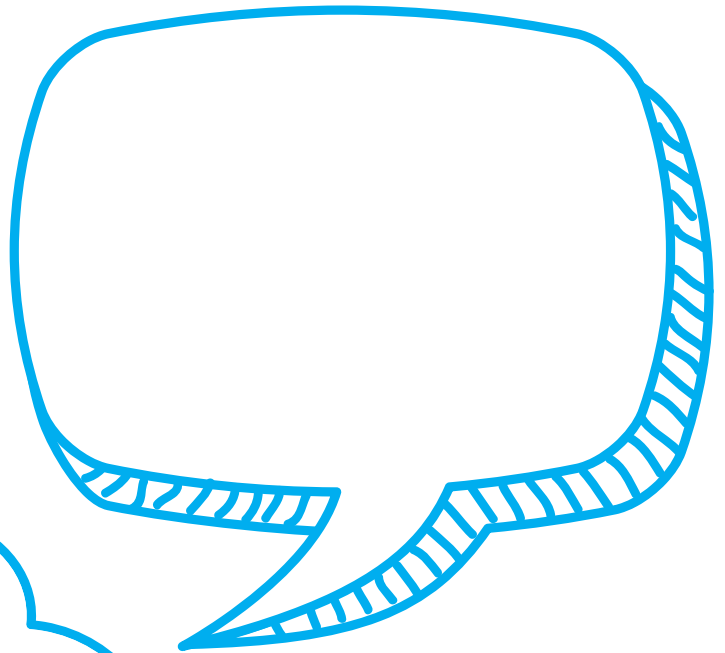
Yes ☐ No ☐

4. Is the sign at eye level?

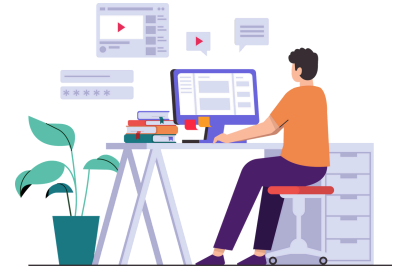
Yes ☐ No ☐

In your group talk about what you have found out. How could you make recycling easier at your school?

Action Plan



The School Office



Here are a few more questions about the bins in your **school office**.

1. Are the bins colour coded. For example is the recycling bin a different colour to the general bin or food bin?

Yes ☐ No ☐

2. Are there signs telling people what to put in the recycling bin?

Yes ☐ No ☐

3. Is the sign near the recycling bin?

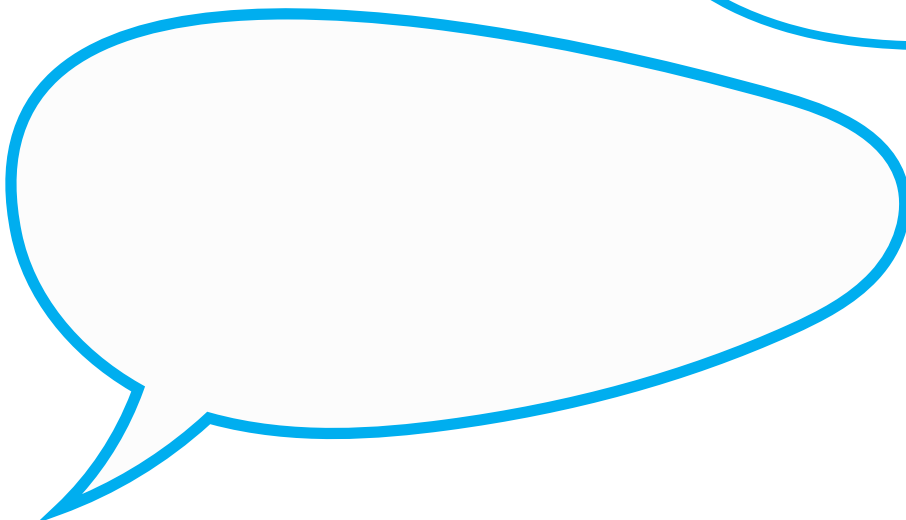
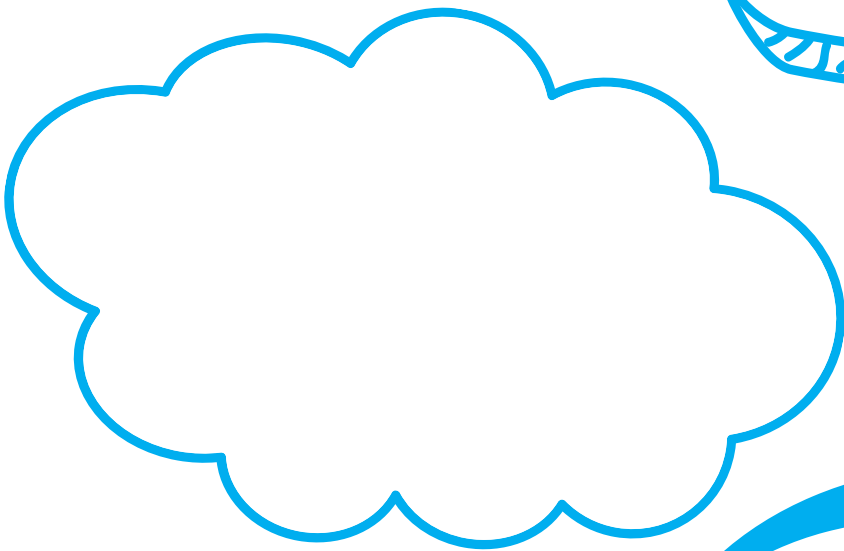
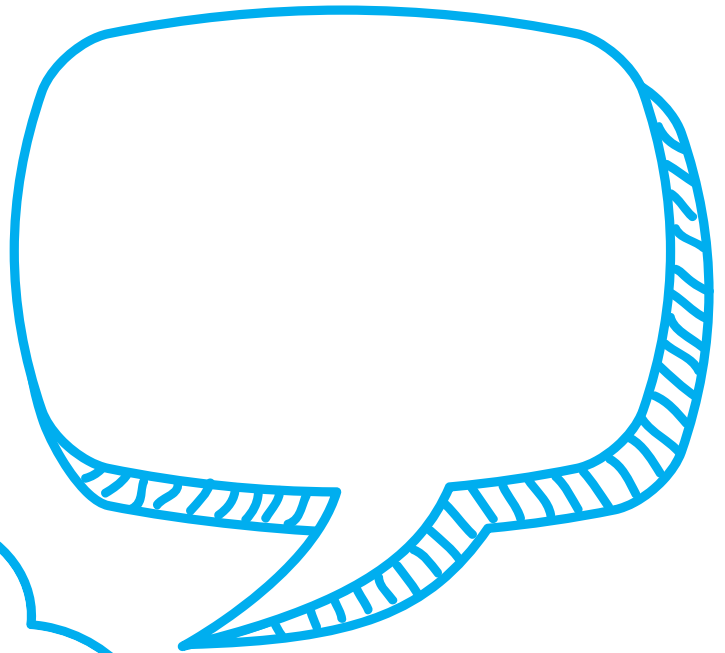
Yes ☐ No ☐

4. Is the sign at eye level?

Yes ☐ No ☐

In your group talk about what you have found out. How could you make recycling easier at your school?

Action Plan



Top tips for Recycling!

- Buy enough recycling bins so that each room has a recycling bin and a general bin.
- Make sure the location of the bins works all year round e.g. a recycling bin on the playing field might not be suitable in the winter when its too muddy to play one there.
- Include a food bin in the lunch hall and staff room too!
- Colour code the bins to make it easy to tell them apart.
- Make sure your recycling is clean and dry.




Signage

- Make sure you have a sign next to your recycling bin.
- Include pictures so that everyone can understand the signs.
- Make sure you have them at a height the majority of the people in the room can easily see. In the reception classroom the sign may be lower on the wall than in year 6 as the children are smaller. In common areas place the sign on the bin too.



How to recycle right

The next few pages gives you some **general** advice about what can and can't be recycled and how to recycle some of the trickier items which, at the moment, can't go in your recycling bin at school!



All bin collectors recycle slightly different items so if in doubt leave it out and contact your bin collection company for advice.

Paper



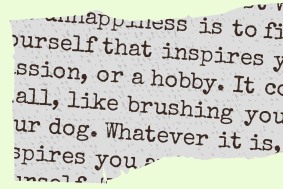
Yes please!



workbooks



cardboard
packaging



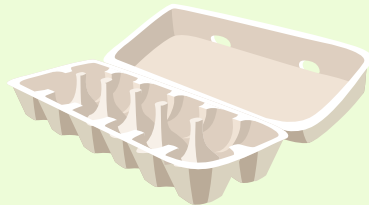
paper with
printing



Journals/
Magazines



envelopes



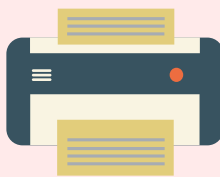
egg boxes



No Thanks!



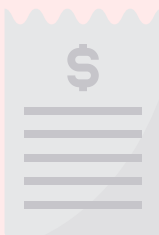
paper cups



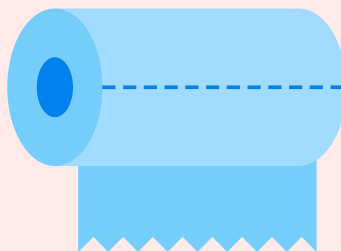
plastic coated paper



shredded paper



receipts



paper towels/ tissues



paper with shiny
foil on it

Plastic



Yes please!



Milk
Bottles



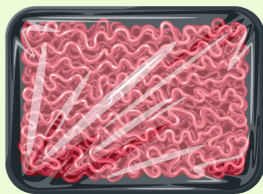
Yoghurt
Pots



Drinks
Bottle



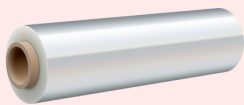
Cleaning Bottles



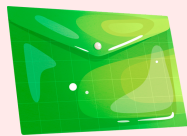
food tray e.g meat or fruit **BUT** films are general waste in most areas at the moment



No Thanks!



Food wrap



Plastic wallets



Plastic sleeves



Highlighters



Plastic Pens &
Felts



Whiteboard
marker pens

Tips for Recycling Trickier Items



Stationery e.g glue sticks, pens

Items which often aren't recycled by collection services can be collected via other means. For example, Edding Pen Recycle Return Box, Ryman Stationers offer in store recycling services and Terracycle offer an Office Supplies & Stationery zero waste box which will collect a range of items such as:

- Business Card Holders, Clips & Clamps, Correction Supplies.
- Empty Glue Sticks, File Pockets & Binders.
- Pencil Sharpeners, Pens, Plastic File Dividers & Folders, Rubber Stamps., Staplers & Hole Punchers, Tape Dispensers.

There are some fees for collection with these services.

Story Books & Text books

Charities will take story books and textbooks. For example books2africa.org/



Computers & Tablets

Many charities will take old computers and recycle them or use them to close the digital divide sustainably. One example is [computeraid.org](https://www.computeraid.org)

Uniform

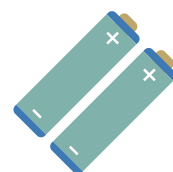
If uniform is too damaged to be passed on or resold as pre-loved it can be often be taken back to a charity shop where they are sold to the rags trade. Check with your local charity shop. If they do take damaged clothing , help volunteers by placing damaged clothing in a bag separate from unwanted clothes which can be sold.



Batteries

Batteries need to be handled with care. If they are placed in the recycling bin or general bin they can start fires in bin lorries or sorting centre. Store them separately for collection. One example is the national battery collection scheme.

<https://www.recycle-more.co.uk/how-to-recycle-and-reduce-waste/recycling-in-the-workplace/national-battery-collection-scheme>

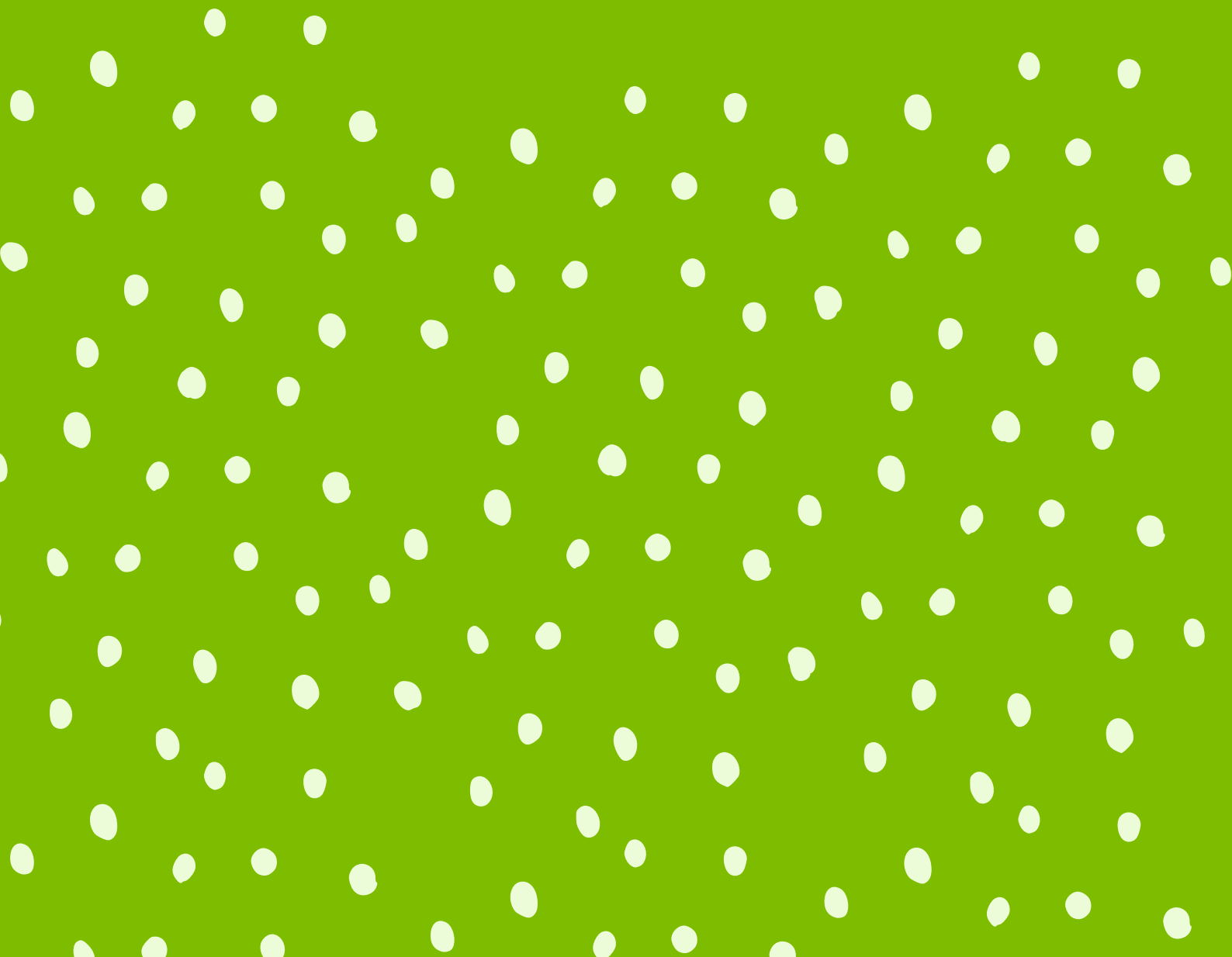


More Resources

For more resources relating to recycling becoming a more sustainable school, go to the rstuff.uk website where you can download:

- What's in your bin toolkit
- Natural resources assembly

Teacher Resources



Our Goals

Use this page to record your goals. That means the things which you think your school needs to fo to make recycling at your school even better!

Now

Sooner

Later

Our Project Plan

Our Goal

Our ideas to do this:

1

2.

3

Things we need...

☐

☐

☐

☐

☐

How will you know if it worked?

**How will you tell
people about your
project?**



See the example on the
next page to help you
complete this!

- 1. Make a list of things you need to do.**
- 2. Decide when each thing needs to happen.**
- 3. Decide who will do each action.**

Things to do	Name	Date

EXAMPLE: Project Plan

Our Goal

Make some new signs for our
recyclign bins

Our ideas to do this:

- 1 A competition to design a
new signs for the recycling bins

- ## 2. Make new signs in our art lessons

- 3

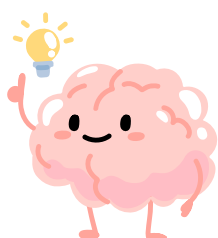
Things we need...

- ☐ List of what can go in the bin
- ☐ Tell people about recycling
- ☐ Explain why we need new signs
- ☐ Paper, crayons, computer
- ☐ _____

How will you know if it worked?

We will have new signs we can
put up on our and near the
recycling bins

How will you tell your teachers and classmates about your project?



We could tell people about our recycling bin survey and the poster competition in assembly or school newsletter

- 1. Make a list of things you need to do.**
- 2. Decide when each thing needs to happen.**
- 3. Decide who will do each action by.**

Things to do	Name	Date
Make a list of what can go in our recycling bins	Pav & Tilly	10th April
Make notes or slides for our assembly	Rosie & Josua	12th April
Judge the competition entries & announce the winner	All of us & Miss Frayne	20th April
Put up the new signs	Liliana & Josh	25th April

RECOUP
1 Metro Centre
Wellbeck way
Peterborough
PE2 7UH

recoup.org

RSTUFF
Our stuff. Our responsibility.

rstuff.uk
rstuff@recoup.org